



Hallmark[™]
GROUP

Veneer

*The beauty of
natural timber*





Hallmark Group: New Zealand's Veneer Experts

Hallmark Group are the only company in New Zealand who slice timber veneer. We're also the only company in New Zealand who can offer a complete veneer solution, producing both veneer panels and veneer doors, ensuring a true and accurate timber match between your panels and doors.

CONTENTS

Sustainability	Pg 2
Our Expertise	Pg 4
Veneer Cuts Explained	Pg 6
Matching techniques explained	Pg 8
Grain direction & grades explained	Pg 10
Our NZ Native Range	Pg 12
Our Exotic Species Range	Pg 24
Our Recon Range	Pg 56
Substrate options	Pg 68
Tips for getting the perfect panel	Pg 69
Finishing	Pg 70
Timber Finishes Guide	Pg 71
Care & Cleaning Recommendations	Pg 72
Applications & limitations, Appearance, Warranty	Pg 73



From forest to finished product, veneered panel is an incredibly efficient way to utilise this precious natural resource, with 1m³ of timber producing close to 1000m² of beautiful decorative veneer

Sustainability

Hallmark Group is committed to the responsible use of resources.

All our veneers are from environmentally responsible suppliers. Our NZ native veneer is from MPI-approved sustainably harvested timber in accordance with the NZ Forests Act (our suppliers of native veneer must supply a Sustainable Forest Management Permit and Sustainable Forest Management Plan). Our standard door timber components are Pine from sustainable resources, and our manufacturing wood waste is recovered and reprocessed into fuel for various requirements, such as heating for hospitals.

Our overseas sources are covered by a mixture of PEFC, FSC, COC FSC, EcoCert and AFS certifications. Our imported timber is harvested in accordance with strict environmental guidelines and is checked under our supplier Due Diligence program as legally harvested and independently certified by SGS to be from well-managed forests under the Forestry Stewardship Council, and the Programme for the Endorsement of Forest Certification forest management schemes. Suppliers must also hold current PEFC and FSC Chain of Custody certificates, guaranteeing supply chain integrity from forest to market.

Hallmark Group is 100% New Zealand owned. We use New Zealand-made MDF board and non-hazardous adhesives.





Our Expertise

Hallmark's veneer specialists are amongst the most respected and experienced veneer experts in New Zealand. Each veneer is meticulously selected to meet our stringent standards, ensuring unparalleled quality, grain and colour of veneer.

Hallmark Group has been working with veneers for over 25 years. We work closely with merchants around the world to source the very best available. Our strong commitment to quality control means that colour and grain matching is closely monitored, producing outstanding results for our customers.

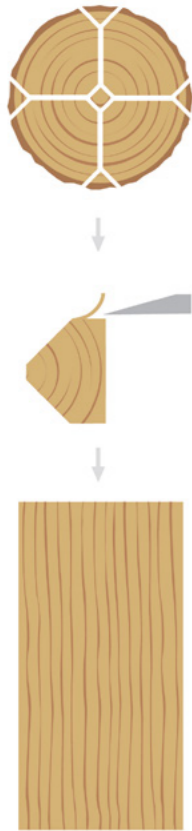
Hallmark veneered panels are ideal for a wide range of applications:

- Internal doors
- Commercial furniture
- Corporate boardrooms
- Kitchen & bathroom cabinetry
- Office & retail fit outs
- Reception desks and foyers
- Restaurant & bar furniture/cabinetry
- Partitions, ceilings and acoustic panelling
- Caskets and coffins
- Residential furniture



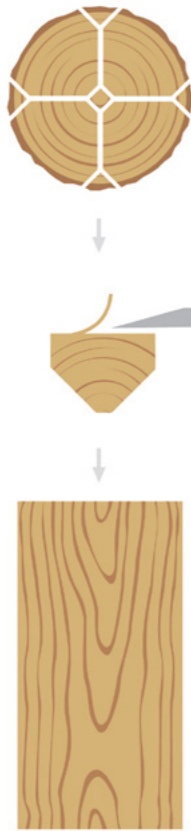
Veneer cuts explained

Quarter Cut



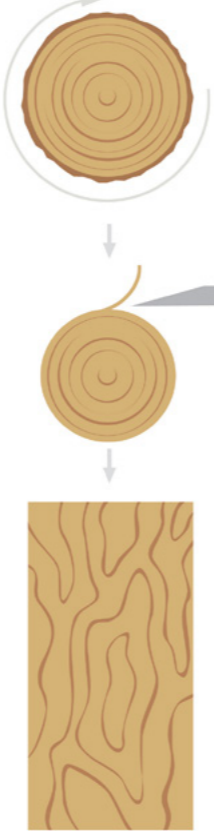
Quarter cut veneer is cut at right angles to the growth rings and this gives a somewhat straight line grain pattern. Rift cut is a slightly different process which results in a more expensive, straighter, cut of veneer mainly applicable to American White Oak

Crown Cut



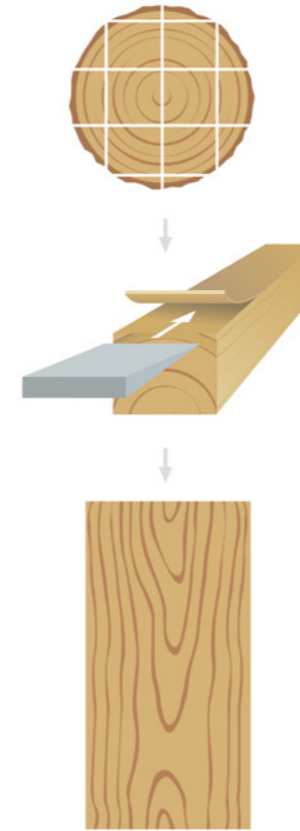
Sliced veneers cut parallel to the growth ring are known as Crown Cut or Flat Cut. The beauty of this style is in its sweeping curves and ovals (in a cathedral style) along the centre of the leaf

Rotary Cut



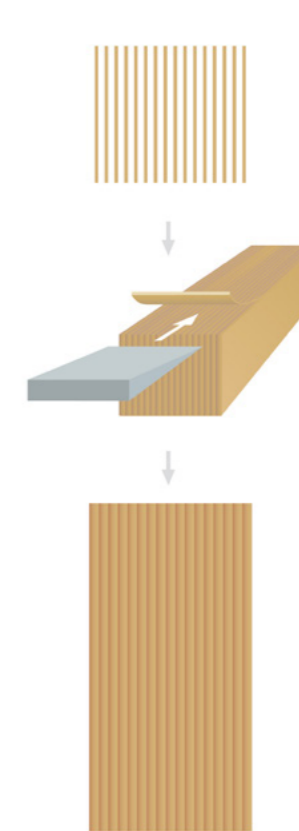
In Rotary veneer, the timber is peeled from the log in a continuous ribbon using a blade in a lathe usually at high speed with a thickness between 0.9mm-3mm. This cut has a swirl grain pattern and is mainly used for plywood

Hallmark Cut



We use two Japanese Marunaka lineal slicers, chosen for their extremely high precision and quality. We process locally sourced native species plus a number of exotic species such as Western Red Cedar, Lusitanica and Macrocarpa.

Recon Cut



Reconstituted timber veneer is the most uniform of all wood veneers. Generally manufactured using timbers such as Poplar or Obeche, the timber is sliced, dyed and then glued back together in a controlled pattern. This is then re-sliced, dried and jointed to make a finished veneer layon.

Matching techniques explained



Hallmark Group have invested significantly in top-of-the-line jointing technology. Different sequencing of laying up results in visually different effects.

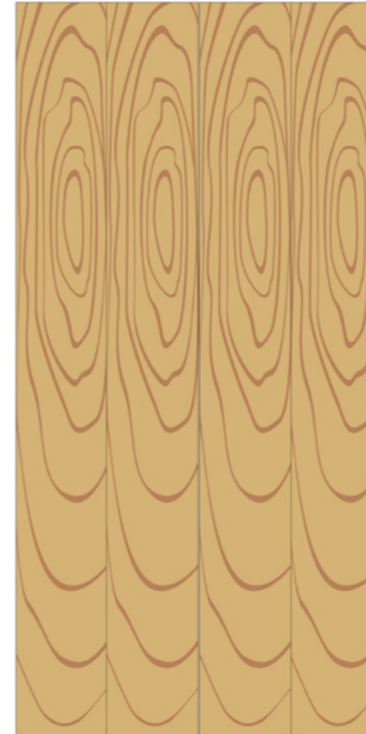
It is often important to consider run/sequence matching: is the project wall panelling? If so, it will need to be side matched. If there is an interior veneered door that requires an over panel, we can do an end match, or is it a kitchen fitout where the job will need to be colour and grain matched?

Book matched



Book matching is the most common method, especially for crown or flat cut veneers, the veneer leaves are joined in such a way as that successive leaves are turned over like pages in a book to create a mirror image, this results in a series of matching pairs across the face.

Slip-matched



Slip matching is often used when using Quarter Cut Veneer leaf, especially White Oak and Eucalyptus. Each leaf is slipped alongside the other resulting in a series of grain repeats, the same side of the leaf is always face up, this helps when stains are being used on veneer and reduces 'picket fencing'.

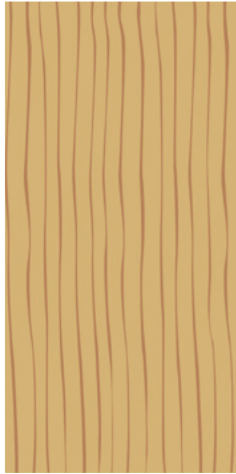
Random matched



Random matched is also referred to as Planked or Mismatched. This method is commonly used to mimic solid timber; each leaf is from a different log, giving a random matched effect.

Grain direction & grades explained

Long Grain



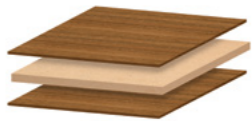
Long grain is the standard, for example; with a 2440mm x 1220mm panel the veneer runs the length dimension 2440mm.

Cross Grain



Cross grain needs to be specified. The veneer runs the width of the panel, for example; with a 1220mm x 2400mm panel the veneer runs the width dimension 1220mm.

Veneer Grades



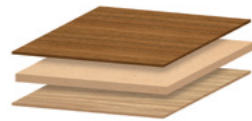
F2S = Face Two Sides

The same first grade face both sides, ideal for room dividers, where both sides of the panels are seen



1F1B = Face/Back

Face grade on one side, and a back grade of the same specie applied to the back of the panel, ideal for kitchen doors



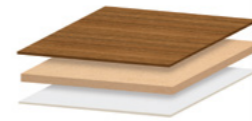
1FAB = Face/Any Back

Face grade on one side, and a backing grade of any species, can be low grade, generally used as a balancer to stop any panel distortion, ideal for wall panelling, where backing can be low grade and isn't seen



1FNB = Face/No Back

Face grade on one side, without a back. Please note: there is a tendency for the board to distort due to uneven tensioning of FNB



1FPB = Face/Paper

Face grade on one side with paper backing to reduce likelihood of curling





Our New Zealand Native Veneer Range



All Hallmark native veneer is from MPI-approved supply in accordance with the NZ Forests Act. Under the Act, native timber can only be taken from forests in a way that maintains forest cover and ecological balance.

Every flitch can be traced back to its original source, whether a sustainably-managed block or wind-thrown log, giving you peace of mind that your native veneer has met the strictest of standards for sustainable sourcing.

Photos and samples of veneer are indicative of the species only. Each tree is unique and there are natural variances within species, something that gives each panel its unique personality.

Timber is a natural product so please be aware of its limitations; it isn't ideally suited to high wear areas, high moisture areas, or direct sunlight.

Matching edging is available.



Species	Face	Matching	Door Length	Panel lengths			Page
			2100mm	2500mm	2800mm	3050mm	
NZ Tawa	Tawa Face	Book match	✓	✓	✓	✗	15
	Tawa Back	Book match	✗	✓	✓	✗	-
Rimu*	Heart Face	Book match	✓	✓	✓	✗	16
	Heart Face	Random match	✓	✓	✓	✗	17
	Colour Face	Book match	✓	✓	✓	✗	18
	Economy Face	Book match	✓	✓	✓	✗	19
	Economy Face	Random match	✓	✓	✓	✗	20
	Rimu Backing	Book match	✗	✓	✓	✗	-
Silver Beech	Silver Beech Face	Book match	✓	✓	✓	✗	21
	Silver Beech Back	Book match	✗	✓	✓	✗	-
Totara	Totara Face	Book match	✓	✓	✓	✗	22
	Totara Back	Book match	✗	✓	✓	✗	-

* Rimu face explanation:

- Heart Rimu is 100% Heart Wood
- Colour Rimu is minimum 60% Heart Wood running full length, with a pale strip
- Economy Rimu can include tight pips, can be mainly pale with a splash of heart, and can contain discolouration

NZ Tawa



NZ Tawa - Crown Cut

Door Length	Panel lengths		
2100mm	2500mm	2800mm	3050mm
✓	✓	✓	✗

Achieves Group 2 fire rating when pressed to FR MDF.
 Achieves Group 3 fire rating when pressed to Standard MDF.



Full sheet - Book Matched

Rimu - Heart



Rimu - Heart

Door Length	Panel lengths		
2100mm	2500mm	2800mm	3050mm
✓	✓	✓	✗

Achieves Group 2 fire rating when pressed to FR MDF.
Achieves Group 3 fire rating when pressed to Standard MDF.



Full sheet - Book Matched

Rimu - Heart



Rimu - Heart

Door Length	Panel lengths		
2100mm	2500mm	2800mm	3050mm
✓	✓	✓	✗

Achieves Group 2 fire rating when pressed to FR MDF.
Achieves Group 3 fire rating when pressed to Standard MDF.



Full sheet - Random Matched

Rimu - Colour



Rimu - Colour

Door Length	Panel lengths		
2100mm	2500mm	2800mm	3050mm
✓	✓	✓	✗

Achieves Group 2 fire rating when pressed to FR MDF.
Achieves Group 3 fire rating when pressed to Standard MDF.



Full sheet - Book Matched

Rimu - Economy



Rimu - Economy

Door Length	Panel lengths		
2100mm	2500mm	2800mm	3050mm
✓	✓	✓	✗

Achieves Group 2 fire rating when pressed to FR MDF.
Achieves Group 3 fire rating when pressed to Standard MDF.



Full sheet - Book Matched

Rimu - Economy



Rimu - Economy

Door Length	Panel lengths		
2100mm	2500mm	2800mm	3050mm
✓	✓	✓	✗

Achieves Group 2 fire rating when pressed to FR MDF.
Achieves Group 3 fire rating when pressed to Standard MDF.



Full sheet - Random Matched

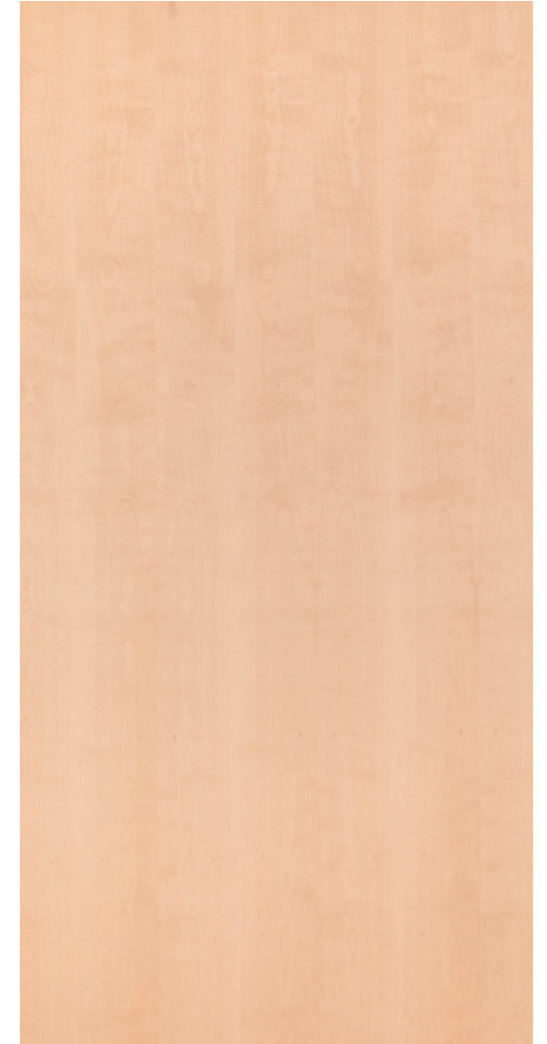
Silver Beech



Silver Beech - Crown Cut

Door Length	Panel lengths		
2100mm	2500mm	2800mm	3050mm
✓	✓	✓	✗

Achieves Group 2 fire rating when pressed to FR MDF.
Achieves Group 3 fire rating when pressed to Standard MDF.



Full sheet - Book Matched

Totara



Totara - Crown Cut

Door Length	Panel lengths		
2100mm	2500mm	2800mm	3050mm
✓	✓	✓	✗

Achieves Group 2 fire rating when pressed to FR MDF.
Achieves Group 3 fire rating when pressed to Standard MDF.



Full sheet - Book Matched





Our Exotic Species Veneer Range



Sustainable natural wood veneers have all the beauty and warmth that can only come from using real wood.

The uniqueness of each log means that every project has its own special appeal, yet at the same time you can have the confidence that the forests where the veneer came from are being sustainably regrown to give a continuing supply in perpetuity.

Because wood is a natural product the appearance of veneer varies and may have natural features such as pin knots and feature. Each tree is unique and the natural variances within species gives each panel a unique personality. Photos and samples of veneer should be considered indicative of the species only.

Veneer is suitable for all low wear and dry vertical interior applications such as furniture, doors and panelling. Being a natural product it isn't suited to high wear areas, high moisture areas, or direct sunlight.

Matching edging is available.

Species	Cut	Matching	Door Length	Panel lengths					Page
			2100mm	2500mm	2800mm	3050mm	3660mm		
American Cherry	Crown Cut	Book match	✓	✓	✓	✓	✗	28	
American White Ash	Crown Cut	Book match	✓	✓	✓	✓	✗	29	
	Quarter Cut	Book match	✓	✓	✓	✓	✗	-	
American White Oak	Crown Cut	Book match	✓	✓	✓	✓	✓	30	
	Crown Cut	Random match	✓	✓	✓	✓	✗	31	
	Quarter Cut	Book match	✓	✓	✓	✓	✓	32	
	Quarter Cut	Slip match	✓	✓	✓	✓	✓	33	
American Walnut	Crown Cut	Book match	✓	✓	✓	✓	✓	34	
	Quarter Cut	Book match	✓	✓	✓	✓	✗	-	
Anegre	Crown Cut	Book match	✓	✓	✓	✗	✗	-	
	Quarter Cut	Book match	✓	✓	✓	✗	✗	35	
Blackbutt	Quarter Cut	Slip match	✓	✓	✓	✗	✗	36	
Eucalyptus Ash	Quarter Cut	Slip match	✓	✓	✓	✓	✓	37	
	Crown Cut	Book match	✓	✓	✓	✓	✗	-	
Eucalyptus Oak	Quarter Cut	Slip match	✓	✓	✓	✓	✓	38	
	Crown Cut	Book match	✓	✓	✓	✓	✗	-	
European Beech	Crown Cut	Book match	✓	✓	✓	✓	✗	39	
	Quarter Cut	Book match	✓	✓	✓	✓	✗	-	
European Birch	Rotary Cut	N/A	✓	✓	✓	✗	✗	40	
European Oak	Crown Cut	Book match	✓	✓	✓	✓	✗	41	
	Quarter Cut	Book match	✓	✓	✓	✓	✗	-	
Hoop Pine	Crown Cut	Book match	✓	✓	✓	✗	✗	42	
Jarra	Crown Cut	Book match	✓	✓	✓	✗	✗	43	

Species	Cut	Matching	Door Length	Panel lengths					Page
			2100mm	2500mm	2800mm	3050mm	3660mm		
Lusitanica	Crown Cut	Book match	✓	✓	✓	✗	✗	44	
Maple	Crown Cut	Book match	✓	✓	✓	✓	✗	45	
Oregon	Quarter Cut	Book match	✓	✓	✓	✗	✗	46	
Radiata Pine	Crown Cut	Book match	✓	✓	✓	✗	✗	47	
Sapele	Crown Cut	Book match	✓	✓	✓	✓	✗	48	
	Quarter Cut	Book match	✓	✓	✓	✓	✗	49	
Smoked Oak	Crown Cut	Book match	✓	✓	✓	✓	✗	50	
Spotted Gum	Quarter Cut	Slip match	✓	✓	✓	✗	✗	51	
Tasmanian Blackwood	Crown Cut	Book match	✓	✓	✓	✗	✗	52	
Tasmanian Blue Gum	Quarter Cut	Slip match	✓	✓	✓	✗	✗	53	
Western Red Cedar	Crown Cut	Book match	✓	✓	✓	✗	✗	54	
	Quarter Cut	Book match	✓	✓	✓	✗	✗	-	

Many other species available on request

American Cherry



American Cherry - Crown Cut

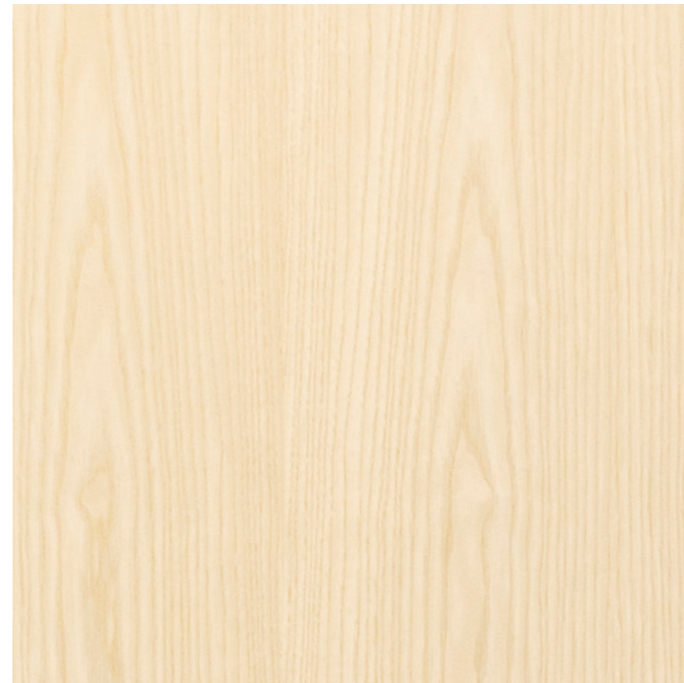
Door Length	Panel lengths			
2100mm	2500mm	2800mm	3050mm	3660mm
✓	✓	✓	✓	✗

Achieves Group 2 fire rating when pressed to FR MDF.
 Achieves Group 3 fire rating when pressed to Standard MDF.



Full sheet - Book Matched

American White Ash



American White Ash - Crown Cut

Door Length	Panel lengths			
2100mm	2500mm	2800mm	3050mm	3660mm
✓	✓	✓	✓	✗

Achieves Group 2 fire rating when pressed to FR MDF.
 Achieves Group 3 fire rating when pressed to Standard MDF.



Full sheet - Book Matched

American White Oak



American White Oak - Crown Cut

Door Length	Panel lengths				
2100mm	2500mm	2800mm	3050mm	3660mm	
✓	✓	✓	✓	✓	

Achieves Group 2 fire rating when pressed to FR MDF.
Achieves Group 3 fire rating when pressed to Standard MDF.



Full sheet - Book Matched

American White Oak



American White Oak - Random Matched

Door Length	Panel lengths				
2100mm	2500mm	2800mm	3050mm	3660mm	
✓	✓	✓	✓	✗	

Achieves Group 2 fire rating when pressed to FR MDF.
Achieves Group 3 fire rating when pressed to Standard MDF.



Full sheet - Random Matched

American White Oak



American White Oak - Quarter Cut

Door Length	Panel lengths				
2100mm	2500mm	2800mm	3050mm	3660mm	
✓	✓	✓	✓	✓	✓

Achieves Group 2 fire rating when pressed to FR MDF.
Achieves Group 3 fire rating when pressed to Standard MDF.



Full sheet - Book Matched

American White Oak



American White Oak - Quarter Cut

Door Length	Panel lengths				
2100mm	2500mm	2800mm	3050mm	3660mm	
✓	✓	✓	✓	✓	✓

Achieves Group 2 fire rating when pressed to FR MDF.
Achieves Group 3 fire rating when pressed to Standard MDF.



Full sheet - Slip Matched

American Walnut



American Walnut - Crown Cut

Door Length	Panel lengths				
2100mm	2500mm	2800mm	3050mm	3660mm	
✓	✓	✓	✓	✓	

Achieves Group 2 fire rating when pressed to FR MDF.
 Achieves Group 3 fire rating when pressed to Standard MDF.



Full sheet - Book Matched

Anegre



Anegre - Quarter Cut

Door Length	Panel lengths				
2100mm	2500mm	2800mm	3050mm	3660mm	
✓	✓	✓	✗	✗	

Achieves Group 2 fire rating when pressed to FR MDF.
 Achieves Group 3 fire rating when pressed to Standard MDF.



Full sheet - Book Matched

Blackbutt



Blackbutt - Quarter Cut

Door Length	Panel lengths			
2100mm	2500mm	2800mm	3050mm	3660mm
✓	✓	✓	✗	✗

Achieves Group 2 fire rating when pressed to FR MDF.
 Achieves Group 3 fire rating when pressed to Standard MDF.



Full sheet - Slip Matched

Eucalyptus Ash



Eucalyptus Ash - Quarter Cut

Door Length	Panel lengths			
2100mm	2500mm	2800mm	3050mm	3660mm
✓	✓	✓	✓	✓

Achieves Group 2 fire rating when pressed to FR MDF.
 Achieves Group 3 fire rating when pressed to Standard MDF.



Full sheet - Slip Matched

Eucalyptus Oak



Eucalyptus Oak - Quarter Cut

Door Length	Panel lengths				
2100mm	2500mm	2800mm	3050mm	3660mm	
✓	✓	✓	✓	✗	

Achieves Group 2 fire rating when pressed to FR MDF.
 Achieves Group 3 fire rating when pressed to Standard MDF.



Full sheet - Slip Matched

European Beech



European Beech - Crown Cut

Door Length	Panel lengths				
2100mm	2500mm	2800mm	3050mm	3660mm	
✓	✓	✓	✓	✗	

Achieves Group 2 fire rating when pressed to FR MDF.
 Achieves Group 3 fire rating when pressed to Standard MDF.



Full sheet - Book Matched

European Birch



European Birch - Rotary Cut

Door Length	Panel lengths				
2100mm	2500mm	2800mm	3050mm	3660mm	
✓	✓	✓	✗	✗	

Achieves Group 2 fire rating when pressed to FR MDF.
 Achieves Group 3 fire rating when pressed to Standard MDF.



Full sheet

European Oak



European Oak - Crown Cut

Door Length	Panel lengths				
2100mm	2500mm	2800mm	3050mm	3660mm	
✓	✓	✓	✓	✗	

Achieves Group 2 fire rating when pressed to FR MDF.
 Achieves Group 3 fire rating when pressed to Standard MDF.



Full sheet - Book Matched

Hoop Pine



Hoop Pine - Crown Cut

Door Length	Panel lengths				
2100mm	2500mm	2800mm	3050mm	3660mm	
✓	✓	✓	✗	✗	

Achieves Group 2 fire rating when pressed to FR MDF.
 Achieves Group 3 fire rating when pressed to Standard MDF.



Full sheet - Book Matched

Jarrah



Jarrah - Crown Cut

Door Length	Panel lengths				
2100mm	2500mm	2800mm	3050mm	3660mm	
✓	✓	✓	✗	✗	

Achieves Group 2 fire rating when pressed to FR MDF.
 Achieves Group 3 fire rating when pressed to Standard MDF.



Full sheet - Book Matched

Lusitanica



Lusitanica - Crown Cut

Door Length	Panel lengths				
2100mm	2500mm	2800mm	3050mm	3660mm	
✓	✓	✓	✗	✗	

Achieves Group 2 fire rating when pressed to FR MDF.
 Achieves Group 3 fire rating when pressed to Standard MDF.



Full sheet - Book Matched

Maple



Maple - Crown Cut

Door Length	Panel lengths				
2100mm	2500mm	2800mm	3050mm	3660mm	
✓	✓	✓	✓	✗	

Achieves Group 2 fire rating when pressed to FR MDF.
 Achieves Group 3 fire rating when pressed to Standard MDF.



Full sheet - Book Matched

Oregon



Oregon - Quarter Cut

Door Length	Panel lengths				
	2500mm	2800mm	3050mm	3660mm	
2100mm	✓	✓	✗	✗	

Achieves Group 2 fire rating when pressed to FR MDF.
 Achieves Group 3 fire rating when pressed to Standard MDF.



Full sheet - Book Matched

Radiata Pine



Radiata Pine - Crown Cut

Door Length	Panel lengths				
	2500mm	2800mm	3050mm	3660mm	
2100mm	✓	✓	✗	✗	

Achieves Group 2 fire rating when pressed to FR MDF.
 Achieves Group 3 fire rating when pressed to Standard MDF.



Full sheet - Book Matched

Sapele



Sapele - Crown Cut

Door Length	Panel lengths			
	2500mm	2800mm	3050mm	3660mm
2100mm	✓	✓	✓	✗

Achieves Group 2 fire rating when pressed to FR MDF.
 Achieves Group 3 fire rating when pressed to Standard MDF.



Full sheet - Book Matched

Sapele



Sapele - Quarter Cut

Door Length	Panel lengths			
	2500mm	2800mm	3050mm	3660mm
2100mm	✓	✓	✓	✗

Achieves Group 2 fire rating when pressed to FR MDF.
 Achieves Group 3 fire rating when pressed to Standard MDF.



Full sheet - Book Matched

Smoked Oak



Smoked Oak - Crown Cut

This is a treated European Oak with good colour-fast qualities

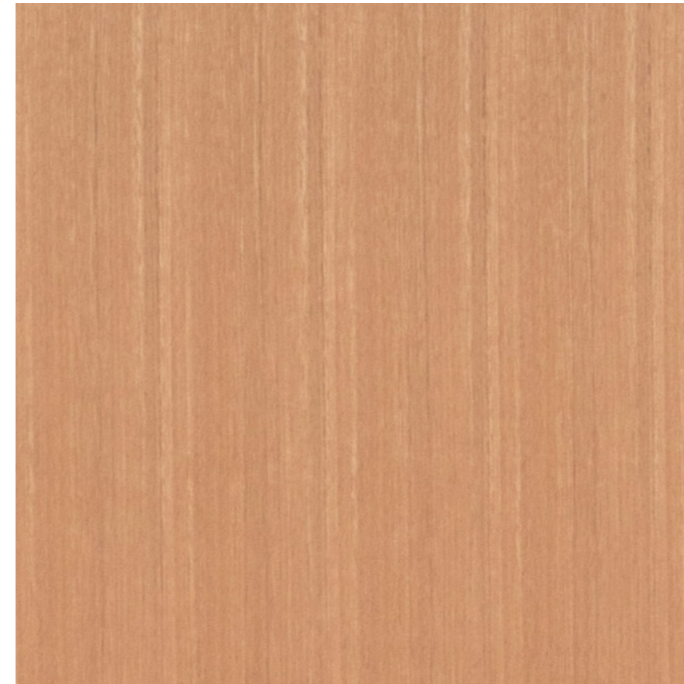
Door Length	Panel lengths				
2100mm	2500mm	2800mm	3050mm	3660mm	
✓	✓	✓	✓	✗	

Achieves Group 2 fire rating when pressed to FR MDF.
 Achieves Group 3 fire rating when pressed to Standard MDF.



Full sheet - Book Matched

Spotted Gum



Spotted Gum - Quarter Cut

Door Length	Panel lengths				
2100mm	2500mm	2800mm	3050mm	3660mm	
✓	✓	✓	✗	✗	

Achieves Group 2 fire rating when pressed to FR MDF.
 Achieves Group 3 fire rating when pressed to Standard MDF.



Full sheet - Slip Matched

Tasmanian Blackwood



Tasmanian Blackwood - Crown Cut

Door Length	Panel lengths				
	2500mm	2800mm	3050mm	3660mm	
2100mm	✓	✓	✗	✗	

Achieves Group 2 fire rating when pressed to FR MDF.
 Achieves Group 3 fire rating when pressed to Standard MDF.



Full sheet - Book Matched

Tasmanian Blue Gum



Tasmanian Blue Gum - Quarter Cut

Door Length	Panel lengths				
	2500mm	2800mm	3050mm	3660mm	
2100mm	✓	✓	✗	✗	

Achieves Group 2 fire rating when pressed to FR MDF.
 Achieves Group 3 fire rating when pressed to Standard MDF.



Full sheet - Slip Matched

Western Red Cedar



Western Red Cedar - Crown Cut

Door Length	Panel lengths			
2100mm	2500mm	2800mm	3050mm	3660mm
✓	✓	✓	✗	✗

Achieves Group 2 fire rating when pressed to FR MDF.
 Achieves Group 3 fire rating when pressed to Standard MDF.



Full sheet - Book Matched





Our Evener Recon Range

Reconstituted timber veneer is the most uniform of all wood veneers, often used where consistent colour and grain is required, such as wall paneling for large commercial fitouts. Reconstituted veneer is manufactured using rotary peeled timber that is colour-enhanced, reformed to a square log, and then re-sliced into rectangular veneer sheets.

Recon Veneer is available in patterns and colours not available in natural veneer. The key with this product is to only use suppliers that use the latest dyeing techniques incorporating proven UV blocking technology. Our Evener range of sliced real wood is made by Alpi, the world's leading manufacturer of reconstituted veneer, produced in Italy from Poplar grown in agricultural plantations and timbers grown in sustained yield forests. This product is only available in face grade up to 3050mm in length. Matching edging is available.

Recon	Pattern	Door Length	Panel lengths				Page
		2100mm	2500mm	2800mm	3050mm		
Angora	Planked	✓	✓	✓	✓	58	
Chinchilla	Quartered	✓	✓	✓	✓	59	
Cumulus	Crown	✓	✓	✓	✓	60	
Even Walnut	Crown	✓	✓	✓	*	61	
Havana	Planked	✓	✓	✓	✓	62	
Metro	Quartered	✓	✓	✓	✓	63	
Ravenna	Planked	✓	✓	✓	✓	64	
Umber	Planked	✓	✓	✓	✓	65	
Romano	Quartered	✓	✓	✓	✓	66	
Two Flamed White	Crown	✓	✓	✓	✓	67	

There are many other colours and ranges we can source - please contact us to discuss



Angora



Angora

Door Length	Panel lengths		
2100mm	2500mm	2800mm	3050mm
✓	✓	✓	✓

Achieves Group 2 fire rating when pressed to FR MDF.
Achieves Group 3 fire rating when pressed to Standard MDF.



Full sheet - Planked

Chinchilla



Chinchilla

Door Length	Panel lengths		
2100mm	2500mm	2800mm	3050mm
✓	✓	✓	✓

Achieves Group 2 fire rating when pressed to FR MDF.
Achieves Group 3 fire rating when pressed to Standard MDF.



Full sheet - Quartered

Cumulus



Cumulus

Door Length	Panel lengths		
2100mm	2500mm	2800mm	3050mm
✓	✓	✓	✓

Achieves Group 2 fire rating when pressed to FR MDF.
 Achieves Group 3 fire rating when pressed to Standard MDF.



Full sheet - Crown

Even Walnut



Even Walnut

Door Length	Panel lengths		
2100mm	2500mm	2800mm	3050mm
✓	✓	✓	✗

Achieves Group 2 fire rating when pressed to FR MDF.
 Achieves Group 3 fire rating when pressed to Standard MDF.



Full sheet - Crown

Havana



Havana

Door Length	Panel lengths		
2100mm	2500mm	2800mm	3050mm
✓	✓	✓	✓

Achieves Group 2 fire rating when pressed to FR MDF.
 Achieves Group 3 fire rating when pressed to Standard MDF.



Full sheet - Planked

Metro



Metro

Door Length	Panel lengths		
2100mm	2500mm	2800mm	3050mm
✓	✓	✓	✓

Achieves Group 2 fire rating when pressed to FR MDF.
 Achieves Group 3 fire rating when pressed to Standard MDF.



Full sheet - Quartered

Ravenna



Ravenna

Door Length	Panel lengths		
2100mm	2500mm	2800mm	3050mm
✓	✓	✓	✓

Achieves Group 2 fire rating when pressed to FR MDF.
 Achieves Group 3 fire rating when pressed to Standard MDF.



Full sheet - Planked

Umber



Umber

Door Length	Panel lengths		
2100mm	2500mm	2800mm	3050mm
✓	✓	✓	✓

Achieves Group 2 fire rating when pressed to FR MDF.
 Achieves Group 3 fire rating when pressed to Standard MDF.



Full sheet - Planked

Romano



Romano

Door Length	Panel lengths		
2100mm	2500mm	2800mm	3050mm
✓	✓	✓	✓

Achieves Group 2 fire rating when pressed to FR MDF.
Achieves Group 3 fire rating when pressed to Standard MDF.



Full sheet - Quartered

Two Flamed White



Two Flamed White

Door Length	Panel lengths		
2100mm	2500mm	2800mm	3050mm
✓	✓	✓	✓

Achieves Group 2 fire rating when pressed to FR MDF.
Achieves Group 3 fire rating when pressed to Standard MDF.



Full sheet - Crown

Substrate options

Hallmark decorative veneered panels can be pressed on a number of different substrates:

- MDF - STD EO, MR EO (Moisture resistant)
- MDF - FR E1 (Fire Retardant)
- PLY - Birch, Gaboon, Meranti BS1088 and Bendy Ply (*other substrates available on request*)

		Length x Width		Board Thickness (mm)												
				3	4	4.75	6	9	12	15	16	18	24	25	28	30
MDF	STD	2440 x 1220	EO	✓	x	✓	✓	✓	✓	x	✓	✓	x	✓	x	✓
		2745 x 1220	EO	x	x	✓	✓	✓	✓	x	✓	✓	x	✓	x	✓
		3050 x 1220	EO	x	x	x	x	x	✓	x	✓	✓	x	✓	x	✓
		3660 x 1220	EO	x	x	x	x	x	✓	x	✓	✓	x	✓	x	✓
	MR	2440 x 1220	EO	x	x	x	x	x	✓	x	✓	✓	x	✓	x	✓
		2745 x 1220	EO	x	x	x	x	x	x	x	✓	✓	x	x	x	x
3660 x 1220		EO	x	x	x	x	x	x	x	✓	✓	x	x	x	x	
MDF FR	Natural FR	2440 x 1220	E1	x	x	x	x	x	✓	x	✓	✓	x	✓	x	x
		2745 x 1220	E1	x	x	x	x	x	✓	x	✓	✓	x	✓	x	x
		3050 x 1220	E1	x	x	x	x	x	✓	x	✓	✓	x	✓	x	x
	Black FR	2440 x 1220	E1	x	x	x	x	x	✓	x	✓	✓	x	x	x	x
		2745 x 1220	E1	x	x	x	x	x	✓	x	✓	✓	x	x	x	x
		3050 x 1220	E1	x	x	x	x	x	✓	x	✓	✓	x	x	x	x
Plywood	Birch	2440 x 1220	E1	x	x	x	✓	✓	✓	x	x	✓	✓	x	x	✓
	Okoume	2440 x 1220	E1	x	✓	x	✓	✓	✓	✓	x	✓	x	✓	x	x
	Gaboon	2440 x 1220	E1	x	✓	x	✓	✓	✓	x	x	✓	x	✓	x	x
		3050 x 1220	E1	x	✓	x	✓	✓	✓	x	x	✓	x	x	x	x
	Bendy Cross Grain	2440 x 1220	E1	x	x	x	✓	✓	x	x	x	x	x	x	x	x
	Bendy Long Grain	2440 x 1220	E1	x	x	x	✓	✓	x	x	x	x	x	x	x	x
	Meranti BS1088	2440 x 1220	E1	x	✓	x	✓	✓	✓	x	x	✓	x	x	✓	x

 = Normal stock item  = Job specific orders placed

Other sizes available on request

Tips for getting the perfect panel

Considerations:

1. What species and quality? - Start by choosing the species of veneer, do you want face two sides, face back or face any back?

2. What style of cut? - Crown cut, Quarter Cut or Rotary Cut

3. What type of matching? - Book match, slip match or random matched (planked)

4. What additional matching requirements? – This is the most important step, is the product required for shelving? If so, similar colour and grain runs will do. Is it a kitchen? Then it all needs to be matched veneer from one run, is the kitchen a mix of long grain and cross grain? Final example, is it for three metre high wall panelling? This will need to be matched veneer that is end matched as well as side matched. NB: The better we understand the end use, the better we can assist with the correct recommendations

5. What substrate? – MDF, MDF MR (moisture resistant), MDF FR (fire rated), Birch ply, Gaboon ply, Meranti BS1088 (marine ply) or Bendy ply

6. What thickness? – Remember veneer on both sides will roughly add a millimetre in thickness. (example 9mm raw MDF + veneer both sides = 10mm finish, 18mm raw MDF + veneer both sides = 19mm finish)

7. What Backing? - do you want face two sides, face back or face any back? NB: It is highly recommended that panels have an overlay on both sides, this reduces distortion, and bowing in the finished panel, paper-backing is also an option to keep price down on wall panelling.

8. What Size? – Long grain is normally ordered by length then width (in regards to panels that the veneer runs the length (example 2440mm x 1220mm), for cross grain veneered panels order by width then length (example 1220 x 2440mm).

9. Quantity/Delivery – How many are required? Is this an ongoing job? Is there veneer needed for the rest of the job? When is the job required into your store?

Technical Notes for Finishing Veneered Panel

Important: These notes are general guidelines only.

Hallmark veneered panels are supplied lightly sanded with a P150 grit sanding belt prior to despatch however all panel will need to be sanded to the coating supplier's recommendations prior to the finishing coats being applied.

Before commencing your job please contact your coatings supplier for their recommendation of the appropriate coating system for your specific application. Also follow their board preparation recommendations prior to commencement of the application of their coating system.

To minimise the risk of colour change and the unnecessary aging of veneer, especially reconstructed veneer, it is advisable to use a UV stabilised finish. All veneer products are light sensitive; in high sunlight areas it is recommended that window coverings be used to reduce the exposure of direct sunlight to the veneered surface. It is also recognised industry wide that in this situation there will be some level of colour change to the veneer surface, hence the importance of picking the right coating system.

The choice of the correct coating system is critical to ensure the life expectancy of your finished product. For example a veneered table top (high wear area) will require a different coating system to a veneered door (low wear area.)

Important Preparation/Precautions:

1. Do not leave veneered panels exposed to wet or humid conditions, maintaining a stable moisture content is critical. MDF picks up moisture from its surrounding environment, so store in a cool/dry moisture stable area
2. The veneered panel will need to be sanded to the coating suppliers recommendations, ensure no sharp edges as some coating systems will tend to thin in these areas, thereby reducing coat thickness
3. Inspect product to be coated under good lighting, check for marks, indentations, check surface is clean and free of dust and other potential contaminants
4. Is important to follow all coating suppliers recommendations, short cuts will result in issues further down the track
5. Ensure you pick the right product for your specific application, if unsure double check with your supplier
6. Remember, the right temperature/humidity, and a contaminant free environment are critical to the quality of the finished product
7. The back or reverse side of all panels must be sealed; this will keep the product straight/flat, and will more importantly retard moisture being able to get into the finished product.
8. Lastly from a Health and Safety perspective ensure there is adequate ventilation/ extraction when applying coating systems and wear the appropriate PPE

Generic type	General properties	Typical application	Hardness wear and tear	Heat resistance hot coffee	Water and yellowing resistance
Acrylic polyurethane, solvent base	The best product for recon veneer & natural veneer	Kitchen, bathroom vanity, doors & panels High quality commercial & domestic projects Window furnishing (venetian blinds & shutters) High quality furniture Table & bar tops Hotel and office fittings	Excellent	Excellent	Excellent to both
Polyurethane	Very good product for recon & natural veneer	Kitchen, bathroom vanity, doors & panels High quality commercial & domestic projects High quality furniture Table & bar tops Laboratory, hotel and office fittings Stairs & handrails	Excellent	Excellent	Water resistance excellent. Do yellow, degree of yellowing varies between brands
Water base two pack	Excellent product for recon & natural veneer. Perform similar to acrylic polyurethane, but more environmentally friendly	Kitchen, bathroom vanity, doors & panels High quality commercial & domestic projects Window furnishing (venetian blinds & shutters) High quality furniture Table & bar tops Hotel and office fittings Stairs & handrails Children's toys & furniture	Excellent	Excellent	As per polyurethane
UV Curable coating	Good product for recon & natural veneer	Timber flooring & blinds Flat pack furniture Vanity, kitchen doors & panels	Excellent	Excellent	Excellent to both
Water base single pack	Not as good as the two pack water base	Window furnishing (venetian blinds & shutters) Quality furniture Children's Toys & furniture	Good	Very good	Very good to both
Acid catalysed	Older technology.	Dining and office furniture Casket manufacture	Good	Good	Good water resistance. Can change the colour of timber substrate
Pre catalysed	Older technology	Dining room tables Wall panelling Office furniture	Fair	Fair	Water resistance is fair. Yellow quite badly
Nitrocellulose	Very old technology	General lounge & bedroom furniture Furniture restoration Wall panelling Casket manufacture	Poor	Poor	Poor to both

Please note: the above is a guide only

Care & Cleaning Recommendations for Veneer

Dusting: Use only a soft dry cloth or feather duster.

Polishing: Use a high quality furniture polish and a soft dry cloth. It is recommended the polish used not contain any silicone as they may cause recoating or refurbishment problems at a later date. Abrasive polishes should be avoided.

Extreme Temperature Changes: The expansion or contraction of the timber due to extreme temperature changes may cause damage to the surface coating. Care should be taken in air conditioned or heated environments to keep temperature changes within reasonable limits. Use heat resistant place mats under hot food and beverages to avoid heat damage.

Spillages: All spillages should be cleaned with a damp cloth as soon as possible. Moisture may cause damage to the coating. High humidity, steam and excessive water being in contact with the coating may cause the coating to crack, or if it gets under the coating cause white marking of the veneer surface. If spilled, all chemical substances and alcohol should be removed immediately from all veneered surfaces.

Dirty or Greasy Marks: After first wiping with a dry cloth, wipe with a cloth lightly dampened with a mixture of water and a high quality furniture polish. Persistent dirty or greasy marks may be removed by mild, non-abrasive proprietary cleaners appropriate

to the type of surface finish. The appropriateness of the cleaner should be sought from the surface coating or cleaner manufacturer. The effect of the cleaner on the surface should be tested on a hidden or a less conspicuous section on the finished veneer surface.

Direct Sunlight: Direct sunlight should be avoided on all internal veneered surfaces as fading, bleaching or colour changes of the surface coating and of the veneer may occur. Excessive hot sunshine may dry the veneer surface more quickly than the veneer substrate thereby causing small surface checks parallel to the grain to appear and possibly damage the surface coating.

Please note: these recommendations have been prepared with due care and are offered only for the purpose of providing some useful and helpful assistance to our clients. Whilst every effort has been made to ensure that this information is in accordance with current technology, it is not intended as an exhaustive statement of all relevant knowledge. As the interactive effects of the whole range of substrates, glues, veneers, surface finishes and the final end uses of the products are outside our control, Hallmark Group accepts no responsibility for error in, or omissions from, this information, nor for specifications or work done or omitted to be done in reliance on this information.

Applications & limitations, Appearance, Warranty

Applications and limitations:

Decorative veneered panels are suitable for use in interior, low wear and dry applications. Veneer panel used in kitchen and bathroom situations needs to be properly edge banded and sealed to ensure there is no moisture egress into the product, proper ventilation in these areas is also important.

Equally important is ensuring that the product is not exposed to high levels of direct sunlight or large fluctuations in humidity, high levels of both can lead to problems in the veneer and substrate.

Veneered panels are not suited to use in damp areas, external applications, as a flooring product or as kitchen counter top or splashbacks.

If in a high wear area, suitable finishing systems must be used, talk to your coating supplier.

Appearance:

Veneer is a natural product, like all timber products it may fade, discolour over time, especially in areas exposed to high levels of light, heat and air. The degree of change totally depends on the veneer species and the exposure to the above elements. Colour change can be minimised, reduced by ensuring windows for example are tinted, glazed or blinds, curtains are used. More importantly, using the right coating system for your application, for example using two pack acrylic-urethane

products with approved UV prohibitors for sealer and top coats.

Veneer being a natural product, there will always be a level of feature that is specific to each specie; this could be pin knots, gum vein, small indentations, slanted and curved direction of grain in Quarter Cuts, off centre crown in crown cuts and paling fence effect in some ¼ cuts especially when stains are used as part of the finishing process. These are not defects but intrinsic features of natural wood veneer and its processing.

Warranty:

Hallmark Group warrants to the original purchaser only, that for a period of 7 years from the date of purchase that any veneer board supplied will be free from any manufacturing defects. This includes defects as a result of poor workmanship or defective materials such as; delamination of the veneer, veneer splits or separation, excessive distorting and bow. Hallmark Group will at its discretion, repair or replace any veneered board without charge if it is defective directly as a result of its manufacture process during the first 7 years after initial purchase. Please refer to our full Veneer Board warranty details on the website.



The information, opinions, advice and recommendations in this document have been prepared with due care, however they are not intended as an exhaustive statement of relevant information. Whilst every effort has been taken to ensure this document is in accordance with current technology, users are advised to make their own determination as to the suitability of this information in relation to their specific purposes and use. It is not possible to cover all associated manufacturing materials, conditions, products and methods, the end user is responsible for carrying out the necessary tests and trials to check that the veneer, coating system, fabrication methods, associated materials and cleaning products/methods are suitable for the application.

Call: 03 313 4754 | Email: sales@hallmarkgroup.co.nz

Web: hallmarkgroup.co.nz | 355 Flaxton Road, Rangiora 7400, New Zealand